

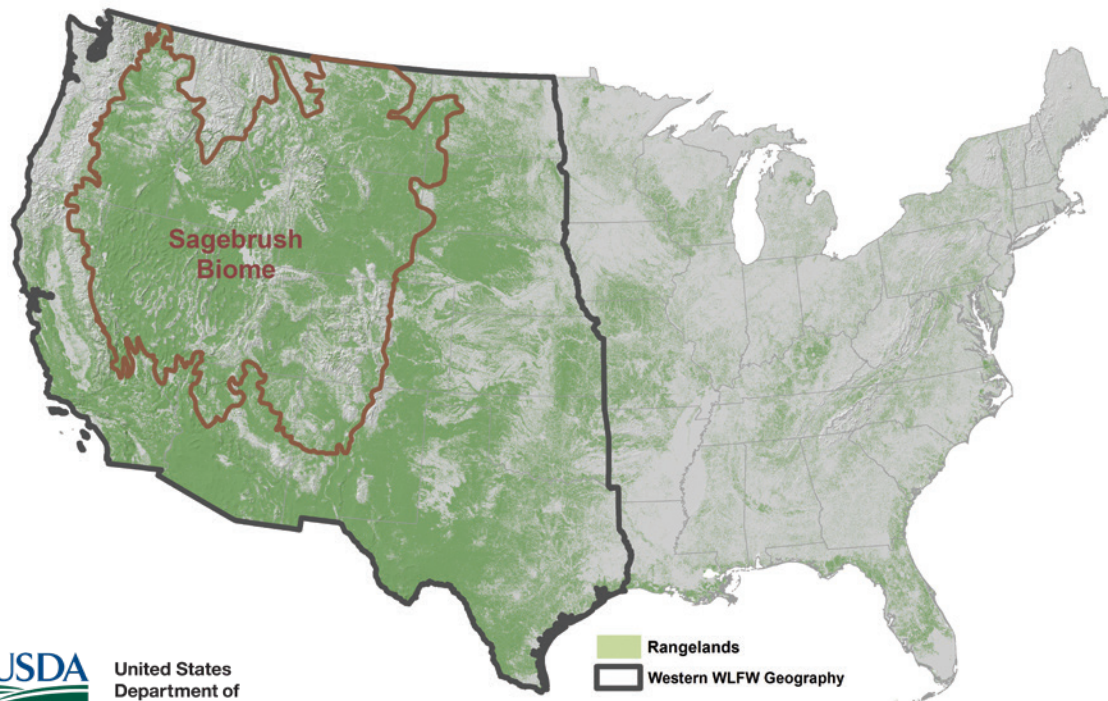
# CONSERVING RESILIENT RANGELANDS FOR PEOPLE AND WILDLIFE

NATURAL RESOURCES CONSERVATION SERVICE  
**WORKING LANDS FOR WILDLIFE**



# A FRAMEWORK FOR CONSERVATION ACTION

# 2021- 2025



## THREATS ADDRESSED

- Exotic Annual Grass Invasion
- Land Use Conversion
- Woodland Expansion
- Riparian/Meadow Degradation

## LEARN MORE

[WLFW.RANGELANDS.APP](https://wlfw.rangelands.app)